



Biomagnetism advanced course

Unit IV

The tumor phenomenon

Presented by:

www.biomagneticguide.com

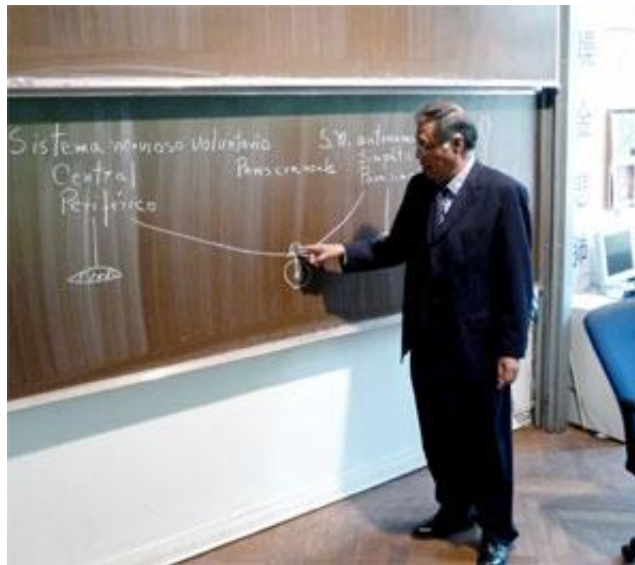
Edition and content: Marco Antonio

Márquez Rosique

The tumor phenomenon

Unit IV Lesson 1

In the 90s, Dr. Isaac Goiz Durán had already treated thousands of patients with biomagnetism. Many of them arrived diagnosed with cancer, to whom Dr. Goiz applied the biomagnetic pair, testing the pairs discovered to date. In many of these patients he achieved amazing results, shrinking tumors, remission of disease, achieving what the doctors could only explain as "false diagnoses". The experience and information accumulated after successfully treating hundreds of cancer patients motivated Dr. Goiz to write a book on this subject called "El fenómeno tumoral" (The Tumor Phenomenon), published in 1996.



In this unit we will begin with an introduction of what cancer is, to continue with the principles that Dr. Goiz enunciates from the point of view of biomagnetism, to end with the main conclusions that Dr. Goiz reached thanks to thousands of patients treated in his consultation.

What is cancer, definition

Cancer is the proliferation of cells that have undergone a genetic mutation causing tumors or metastases. Genetic mutations are very common and occur throughout a person's life due to several factors: Starting because in each replication of the DNA molecule there is the possibility of an error in the process. And then a series of factors intervene capable of damaging cellular DNA such as:

- Infections

- Harmful substances: toxic, free radicals
- Radiation

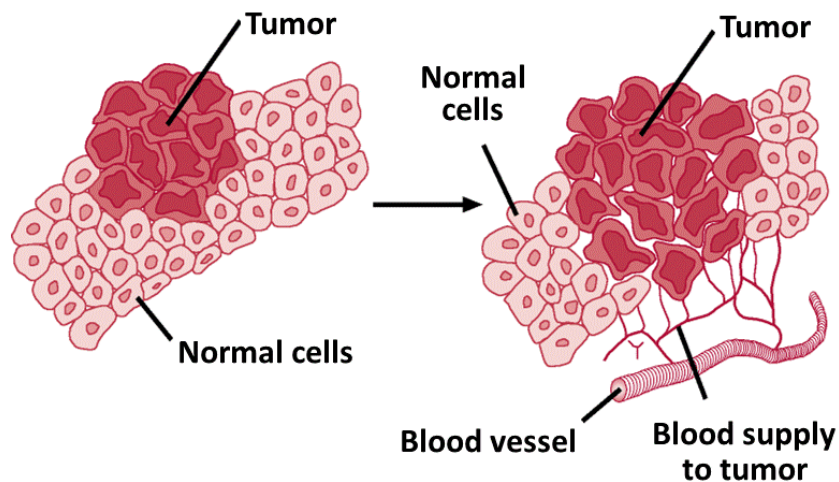
As we already mentioned, genetic mutations happen frequently, but usually the very nature of the mutation prevents the cell from continuing to function, that is, to live. On other occasions, a programmed death process, called *apoptosis*, is activated to prevent the mutant cells from damaging the organism. The immune system also intervenes by detecting damaged cells and proceeding to eliminate them through macrophages. But when all this fails, then the mutant cell can continue to reproduce and thus form a whole group of mutant cells.

The most widely accepted theory holds that cancer originates from a single damaged cell that is capable of reproducing to form a tumor. Later we will detail how this process works and the association of pairs that occurs according to the various stages, based on the discoveries of Dr. Isaac Goiz Durán.

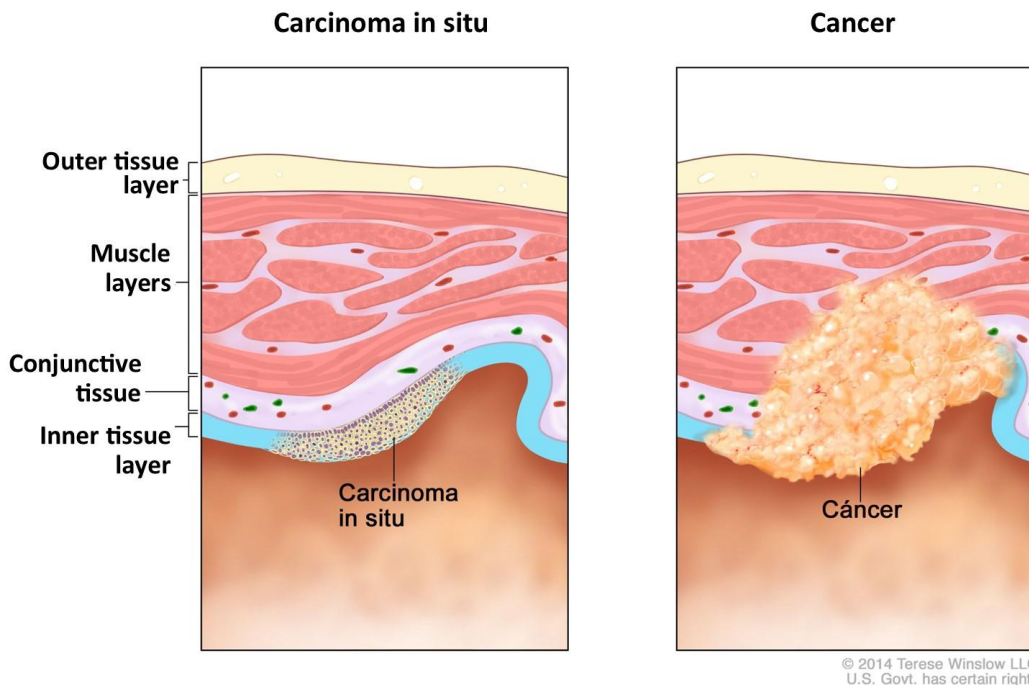
Types of cancer, classification

When we talk about cancer, we are not talking about a single disease, but about a wide variety of diseases that are based on the mutation of cellular DNA. Oncology is responsible for studying in depth each of the varieties of cancer that can develop. Its classification can offer different criteria such as tumor morphology, affected tissues, etc.

Tumor. neoplasm, mass of tissue without physiological function that grows independently of surrounding tissues.

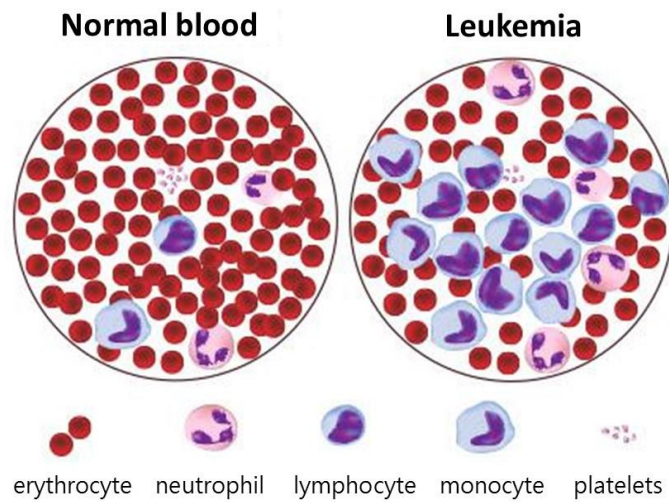


Carcinomas. These are cancers that originate from epithelial cells. These are cells that line the surface of organs, glands, or body structures. They represent more than 80% of all cancers, including the most common varieties of lung, breast, colon, prostate, pancreas and stomach cancer, among others. Its high incidence is due to the fact that epithelial cells are the ones that have a faster reproduction rate, which gives cancerous cells a greater opportunity to proliferate. On the contrary, cells that have little or no rate of reproduction will not produce cancers, such as myocardial cells, in the heart; or neurons, in the brain.



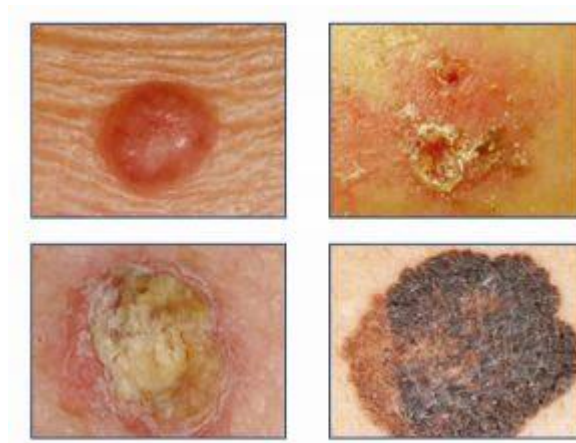
Sarcomas. They are cancers that are formed from the so-called connective or conjunctive tissue, from which the muscles, bones, cartilage or fatty tissue derive. The most common are bone sarcomas.

Leukemias. They are cancers that originate in the bone marrow, which is the tissue responsible for maintaining the production of red and white blood cells, and platelets. Alterations in these cells can produce, respectively, anemia, infections and coagulation disorders (bleeding or thrombosis). Many of the types of leukemia are congenital.



Lymphomas. They develop from lymphatic tissue, such as that found in lymph nodes and organs.

Melanoma. It is a type of skin cancer. Cancer cells are found in the outer layer of the skin: the epidermis. One of the main causes is exposure to UV rays from the sun for prolonged periods, it can progress rapidly and spread to other organs, a process known as metastasis. Biomagnetism associates it with the presence of viruses, in many cases the Hanta virus is responsible.



Angiomas. It is a malformation caused by an exaggerated proliferation of blood vessels. They are common on the skin, where they appear as red spots, in the liver they can be caused by cirrhosis.



Usually, the above terms are accompanied by a prefix that indicates the type of cell that generated it, for example:

- Adeno = gland
- Chondro = cartilage
- Erythro = red blood cell
- Hemangio = blood vessel
- Lipo = fat
- Melano = pigmented cell
- Myo = muscle cell
- Osteo = bone

Dr. Goiz's critique of allopathic medicine

Dr. Isaac Goiz suggests that orthodox diagnostic methods are imprecise, tending to resort to various means such as: cytological studies, biopsies, radiographs, tomography, etc. Finally, the malignancy of the tumor is determined by the (subjective) criteria of the oncologist, who is based mainly on his experience and knowledge. Many times the opinion of a first doctor is contrary to that of a second, which in turn is refuted by that of a third specialist.

The classification of tumors can be based on their morphological characteristics: carcinoma, gangrenous, alveolar, colloid, spider, aerolar, atrophic, cellular, cystic; to mention just a few.

It is more important for the doctor to classify it according to the organ it affects: breast cancer, prostate cancer, colon cancer, etc

Not finding a single factor that determines the formation of malignant tumors, medical science mentions risk factors that can be a wide range of substances such as smoke, chemicals, pollutants, radiation, environmental factors, etc.

Biomagnetism Advanced Course

Presented by: www.biomagneticguide.com

Allopathic medicine mainly uses three resources for the treatment of different types of cancer: surgery, chemotherapy and radiotherapy.

- Surgery removes the tumor, as long as this procedure is considered safe. It is a method that has serious repercussions for the patient's body and psyche since it deprives it of its entire organism.
- Radiation therapy aims to kill cancer cells through the use of radiation. It should be noted that radiation is the main cause of genetic mutations, which is the cause of cancer.

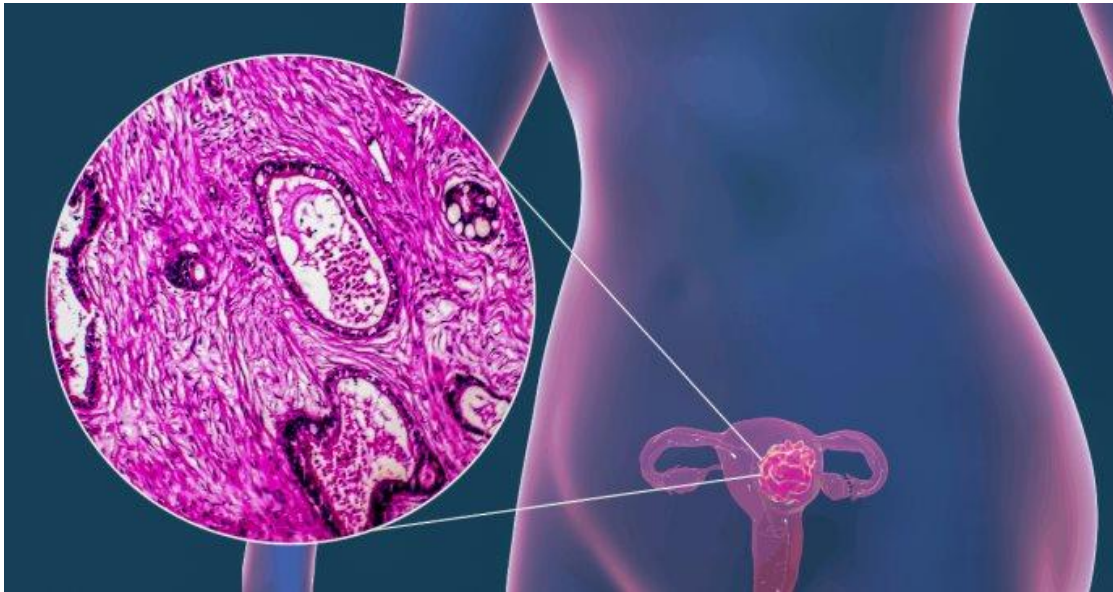


- Chemotherapy focuses primarily on preventing cell division through the use of heavy (toxic) metals. The main problem with this therapy is that it does not discriminate between normal cells and cancer cells, wreaking havoc throughout the body and mainly in fast-growing tissues: epithelial, digestive system, etc. In addition to causing long-term side effects mainly in the blood and bone system.

Cancer, treatment with biomagnetism

Unit IV Lesson 2

Biomagnetism has been able to successfully treat different types of cancer. Dr. Goiz's extensive experience led him to discover the pathogens associated with the processes. For example, Dr. Goiz had long ago discovered that the presence of the human papillomavirus was a determining factor for cervical cancer, while *Helicobacter pylori* was present in stomach neoplasms, conclusions that Dr. Goiz reached since the last century, long before institutional medicine confirmed it.



Here are some of the types of cancer that can be treated with biomagnetism and the associated pathogens

- Cervical cancer (HPV, HIV-AIDS)
- Stomach cancer (*Helicobacter pylori*)
- Breast cancer (various factors)
- Pancreatic cancer (various factors)
- Prostate cancer (various factors)
- Liver cancer (various factors)
- Lymphomas in lymph: (*Brucellosis*)
- Hodgkin lymphoma: (*Diphtheroid Bacillus*)

Tumor classification according to etiology

In summary, we can see the result of the presence of different types of pathogens and the disorders they cause:

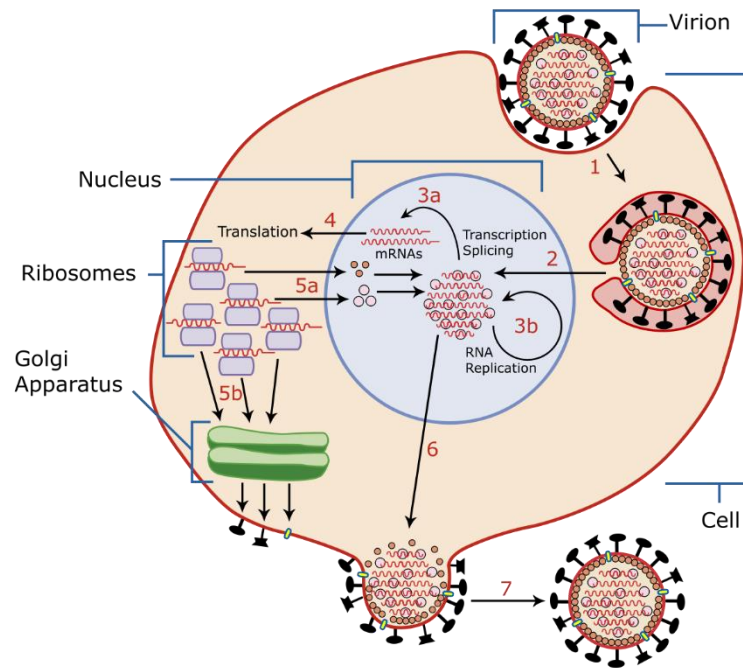
- Pathogenic virus + pathogenic virus = **Infiltrators**
- The exudate accumulates in potential cavities (skin, peritoneum, pericardium, periosteum, pleura, meninges, joint cavities). In this case, the virus is inhibited by the biomagnetic pair and the cavity is drained.
- Pathogenic virus + pathogenic bacteria = **Abscesses** (pus)
- They are mechanically drained.
- Pathogenic virus + 2 or more bacteria = **Cyst, condyloma**.
- They are impacted by the biomagnetic pair and then the condyloma can be burned.
- Pathogenic virus + 2 or more bacteria + fungus = **Benign tumor**
- or false positives.
- Pathogenic virus + 2 or more bacteria + mycobacterium leprae or tuberculosis = **Malignant tumor = true cancer**.

Cancerous process

As the virus penetrates, its mucoprotein thickens the cell membrane. By separating in this way, the virus changes the pH of the cytoplasm, expelling potassium, zinc, magnesium, and other ions; and absorbing on the other hand negative radicals (fluorine, chlorine, bromine, iodine) The final consequence is edema (increase of fluid inside the cell). The ribosomes of the virus impact the cell nucleus.

Bacteria that do magnetic resonance with structural viruses (RNA) impact the unprotected cell by altering the DNA and initiating uncontrolled reproduction.

As we can see, the pathogens involved in the cancerous process can be numerous and there is no direct correlation between a certain type of cancer and the pathogens found, so complete testing is the only way to carry out an effective treatment. However, we can mention some generalities:



Viruses and cancer

The cancerous process begins with the presence of viruses, they are the ones who begin the process of cell alteration, irritating the cell membrane. As recently recognized by allopathic medicine, there are specific viruses for different types of cancer; As we already mentioned, the papilloma virus is responsible for most cases of cervical cancer. Therefore, the biomagnetist will have to look for the presence of one or several types of viruses, in all cases.

Bacteria and cancer

Bacteria take advantage of the weakening of the cell membrane to infect tissues, they also generate mucus and toxic waste that further alter the cell. The specific pair and type of bacteria is the factor that will determine the location of the tumor or cancerous phenomenon.

Parasites and cancer

Parasites are involved in the formation of tumors, according to the latest findings by Dr. Isaac Goiz Durán, and are also responsible for tissue degeneration (necrosis). Depending on the location of the cancer, it will be the associated parasite, in most cases. For example: cysticercus or entamoeba histolytica in the brain, scabies or scabies in the neck or head, tapeworm solium is associated with breast cancer, or ascariasis in the pelvis.

Evolution of the tumor phenomenon

Dysplasia:

Dysplasia is when the cells present abnormalities either in their morphology or in their functionality. Dysplasia is caused by damage to cells, primarily their genetic code (DNA). That is, they present atypical alterations that affect their size, shape and organization. In medical biomagnetism, the presence of two pathogenic bacteria and one pathogenic virus is required. Allopathic medicine often diagnoses abscesses or dysplasias as neoplasms, consequently 80% of diagnosed neoplasms are "false positives".

Apply the pair **costohepatic - liver**.



If the degenerative process continues, it can lead to accelerated cell growth: hyperplasia or neoplasia.

Neoplasm:

The **affin** = pair has an antineoplastic effect, minimizes tumor growth (infradiaphragmatic), and can also be located on the popliteal fossa. When it grows aggressively and affects surrounding organs, we speak of "malignancy".

According to medical biomagnetism, the presence of three bacteria and a pathogenic virus is required for a neoplasm to develop. A neoplasm may be so small that it can only be seen under a microscope. If it does not affect the body mainly, it is called a benign neoplasm. Benign neoplasms commonly end with the suffix "noma" such as: fibroma, lipoma, chondroma, lymphangioma. Although there are exceptions to this rule such as melanoma, which is malignant.

Neoplasms can also grow at an accelerated rate, affecting the organ where it has formed and compressing and altering adjacent organs. When it behaves in an "aggressive" way it is called a malignant neoplasm, which is synonymous with cancer. The aggressive behavior of the neoplasm is usually accompanied by the presence of some pathogenic fungus.

In most cases, the neoplasm originates from a single mutant cell that gives rise to multiple clones. In biomagnetism, the malignancy factor is determined by the presence of *M. Leprae* or the *M. Tuberculosis*. The presence of any of the corresponding pairs **scapula =** or **supraspinatus =** are a sign of the presence of true cancer, according to Dr. Goiz, who explains that *M. Leprae* produces a substance called *leprosin* that breaks down the cell nucleus and thus damages the genetic material.



Metaplasia:

It refers to the cytological transformation of mature epithelial tissue that may be closely or remotely related.

Tumor:

A mass of tissue from a part of the body whose cells undergo abnormal growth and have no physiological function; these cells have a tendency to invade other parts of the body. According to the clinical experience of Dr. Goiz, the tumor is due to the presence of pathogenic viruses associated with two or more bacteria and fungus(es). The malignancy factor is determined, again by the presence of *M. Leprae* or *M. Tuberculosis*.

Metastasis:

It is the process of spread of a cancerous focus to an organ other than the one in which it originated. According to allopathic medicine, it occurs by blood or lymphatic route. It is responsible for 98% of deaths from undetected cancers. The theory that explains metastasis according to allopathy presents several difficulties, so we have to consider other hypotheses. For Biomagnetism, metastases are completely independent disorders of cancer itself and depend on the presence of specific pathogenic organisms such as *Clostridium* and *Pseudomonas*. Bacteria such as *M. Leprae*, *M. Tuberculosis*, added to *Clostridium* or *Pseudomonas* produce various toxins that favor the malignancy of cells, as well as processes such as metastasis. The exact way in which these toxins act affecting the immune system, the cell or the DNA is not yet fully understood.

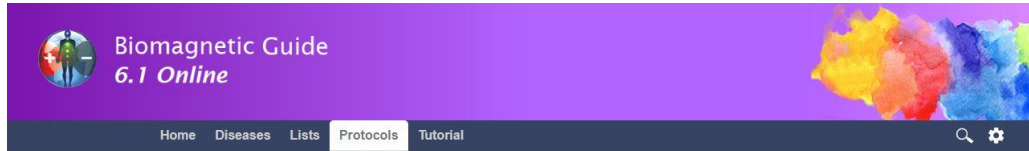
False positives

According to this criterion, Dr. Goiz found that a large percentage of patients who came to his office with a previous diagnosis of cancer did not actually have true cancer, that is, malignant cells. In many cases it was only abscesses, hyperplasias or benign tumors, which can be treated in the same way with biomagnetism.

Protocols

Since the cancerous phenomenon is highly complex and can manifest itself in multiple ways, a protocol cannot be established for all cases. In fact, the treatment of the different types of cancer is due to multiple factors, usually involving several biomagnetic pairs. In the [Biomagnetic Guide](#) we present the pairs most frequently found in the various types such as breast cancer, pancreatic cancer, prostate cancer, etc.

The list of pairs that is presented in each of the cancer types is based on the experience of several biomagnetists, it refers to the most frequently found pairs, which can be tested as a starting point. However, this does not imply that all the pairs should be applied without having tested each one of them, much less omitting the entire testing protocol. Full testing will always be the best tool to treat anyone, especially those with cancer.



Advanced test protocol

It is recommended to follow this protocol after completing a complete scan. To carry out this protocol, the bioenergetic level domain is required and an advanced biomagnetism course has been attended.

	Disorder	Description
A	Abnormal toxins reservoirs:	
A-1	Abscess	Pus accumulation.
A-2	Exudate	Organic liquid that oozes through a non-inflamed surface such as skin, mucosa or serous cavity.
A-3	Trasudate	Organic liquid that oozes through a non-inflamed surface such as skin, mucosa or serous cavity.
A-4	Infiltrate	Aculation of pus in an internal cavity due to infection. Serous or serous cavity.
A-5	Cyst	Closed bag with its own membrane that develops abnormally in a cavity or body structure
A-6	Polyps	Growth that protrudes from a mucous membrane and can become cancerous.

Testing themes:

- A: Abnormal toxins reservoirs
- B: Tissue disorders
- C: Circulatory System Disorders
- D: Reaction to substances
- E: Psycho-emotional disorders
- F: Chakras balance
- G: Genetic disorders

In bioenergetics we can start by asking if there is any type of abnormal formation, using the advanced protocols page, in the [toxin reservoirs](#), section, asking for each one of them: abscess, exudate, transudate, infiltrate, cyst, polyps, etc. Cancer occurs when we find malignant neoplasm, malignant tumor or metastasis. And as Dr. Goiz indicates, the **scapula=** or **supraspinatus=** pairs are the ones that really determine the existence of true cancer. It is also important to test the reservoirs of Leprosy: **brachial-elbow**, **sinus-frontal sinus**, possible **duodenum-esophagus**.

Bioenergetics allows us to take some extra steps to achieve a better treatment. Once the pathogens involved have been detected and the respective pairs have been applied, a very important question to ask is: where is the origin? For example, in the sinuses the origin is normally **mediastinum =**. The point is impacted either with magnets (physically) or with bioenergy (mentally). In other cases, it will be necessary to find (through bioenergetics) the point of origin for each type of cancer that the person presents.

According to the degree of evolution of the disease, the body suffers various disorders such as the formation of abscesses, cysts, tumors... In some cases, the malformations can be gradually reabsorbed by the body itself.

The toxins and remnants that remain in the body can be drained through the lymphatic system, from the interstitial spaces, or from potential cavities. In the next lesson we will talk about various means of detoxification and other factors that can help in recovery.

Detoxification

Unit IV Lesson 3

As we have seen: tumors, cysts, metastases or any other manifestation of the tumor phenomenon, are the result of a long degenerative process of the organism. For the same reason, we must expect that the process of restoring balance and health will take some time: weeks, months or even years. The therapist will have to monitor the consultant throughout the recovery period, doing complete tests and applying the pairs that are necessary on each occasion. It will be possible to have a greater possibility of success in recovery when other tools are used that allow the consultant to be treated in an integral way, attending to the different aspects such as:

- Hormonal balance
- Energy balance
- Emotional health
- Natural diet
- Spiritual or transcendent aspects

Some tools that can complement the treatment with biomagnetism can be: food supplements, emotion code, homeopathy, acupuncture, naturopathy, reiki...

Special attention should be paid to the hormonal balance and the strengthening of the person's immune system, applying the corresponding pairs. That is why in the previous unit we have emphasized the importance of maintaining the greatest balance and harmony on the physical, emotional and mental planes, only in this way can silent inflammation and alteration of the immune system be avoided.

The practice of exercise, anti-stress habits and a healthy diet must become an integral part of the patient's life. In addition, weekly biomagnetism sessions may be given, paying special attention to energy balance pairs, as well as those that help strengthen the immune system such as the Angeles pair:



- appendix - **thymus**
- kidney - **kidney**
- thymus – **thymus**
- dorsal 6 – **dorsal 6**.

For more information consult the [immunocompetence](#) article in the [Biomagnetic Guide](#).

Anti-cancer nutrition

“Paula Jiménez-Fonseca, medical oncologist at the Central University Hospital of Asturias (HUCA), warns that a large part of the population is still convinced that cancer has a fundamentally hereditary origin, “when the reality is that all cancers are originate from genetic changes, in 40% this is due to environmental causes and only between 5-10% are clearly hereditary”. Diet is thus directly linked to 9% of tumors, while 5% are linked to obesity, but in conjunction with other factors, diet is associated with more than 35% of all cancer cases that occur .”(1)

It is very important to choose and consume food in its natural form, that is, avoiding everything industrialized. Avoid fried, smoked foods and in general all foods of animal origin, especially sausages, red meat and dairy products. This is due to the amount of hormones, antibiotics and other compounds they contain that alter the organic balance and favor cancerous processes.



While vegetables and fruits contain substances such as flavonoids, vitamins, isoflavones, phytoestrogens, etc., all of them with excellent anticancer effects.

The diet can be supplemented with superfoods such as seeds, sprouts, red fruits such as strawberries, raspberries, cherries or blackberries. Especially broccoli, tomatoes, blueberries, carrots, peppers, beets. In short, the topic is very broad, so we only give the most general notes so that the therapist and the patient take on the task of designing a tailored diet; For this reason, we invite you to study our free section on [Nutrición Vegetariana](#) (Vegetarian Nutrition), as well as read the article [10 alimentos estrella para prevenir el cáncer](#) (10 Star Foods to Prevent Cancer).

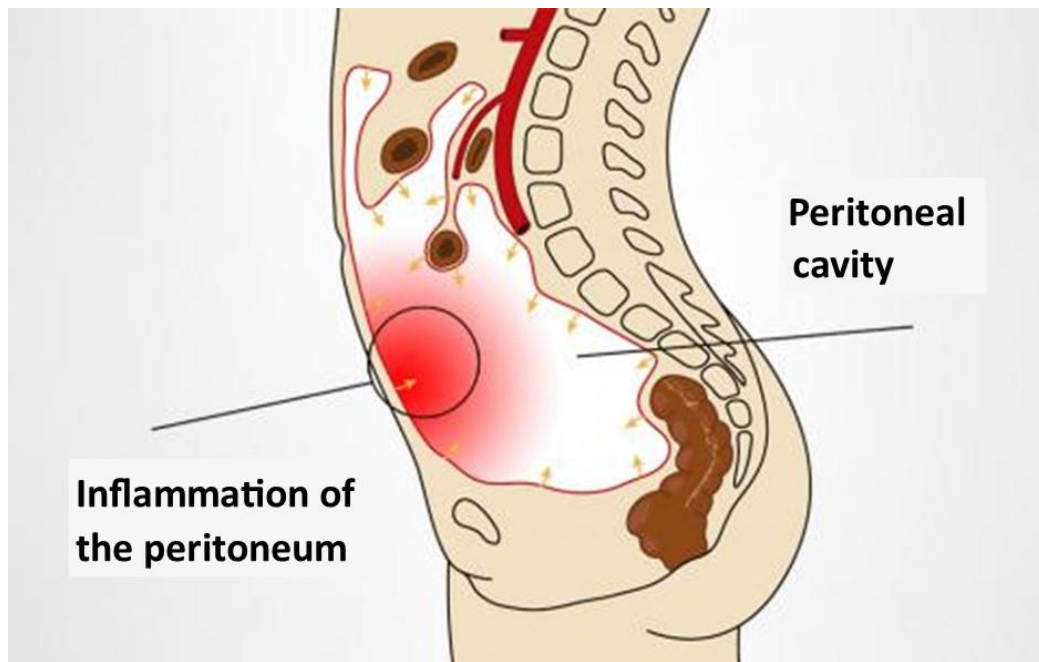
Elimination of toxins with biomagnetism

On the other hand, a detoxification process should be favored, for which techniques such as intestinal lavages or depurative herbal teas can also be used. Not forgetting intermittent fasting, which has recently been recognized for its value as a means of detoxification.

The toxins and remnants that stay in the body can be drained through the lymphatic system, from the interstitial spaces, or from potential cavities. Let's see what the potential cavities are and how they are drained by biomagnetism.

Potential cavities

When two or more excited pathogenic viruses associate, abnormal fluid is produced in these spaces. If a bacterium joins the associated viruses, we can have a **Septic infiltrate**. In allopathy, the infiltrate can be acute or chronic, bacterial, leukocyte, tumoral, etc. In Radiology it presents as a localized or diffuse opacity. An infiltrate causes alteration in a potential cavity, produced by the accumulation of an element or substance that has different protein characteristics.



Depending on where they are housed is where the disorder will develop. In this case, the virus is inhibited by impacting the corresponding biomagnetic pairs and the cavity is drained.

The potential cavities have various functions such as the protection of the organs they contain, cushioning and avoiding friction, formed by membranes and liquid with a high protein content; are the following:

- skin, the infiltrate presents as dermatitis.
- pleura, (contains the lungs) the infiltrate presents pleurisy.
- pericardium, (contains the heart) pericarditis occurs.
- peritoneum, (contains the intestines) peritonitis occurs.
- periosteum, (contains various bones).

Biomagnetism Advanced Course

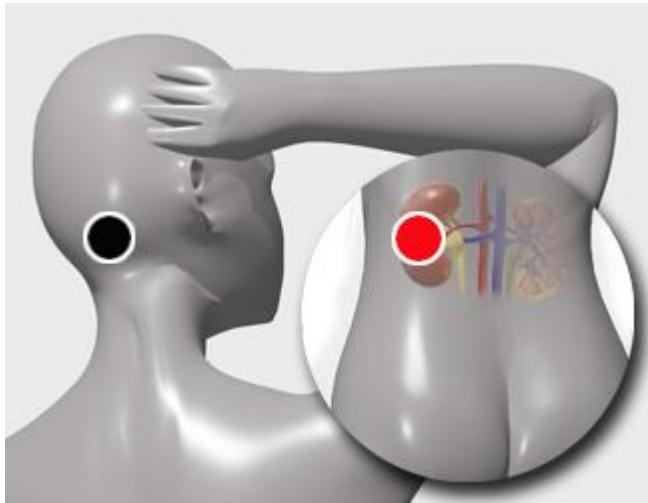
Presented by: www.biomagneticguide.com

- meninges, (contains the brain and spinal cord) meningitis or intracranial edema occurs.
- joint cavities, (contains several joints), presents as inflammation or arthritis

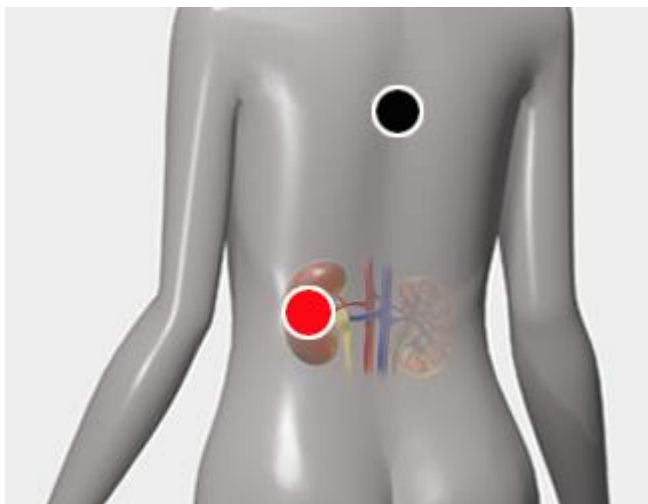
Drainage of toxins

The infiltrators are drained according to their location by placing the following pairs:

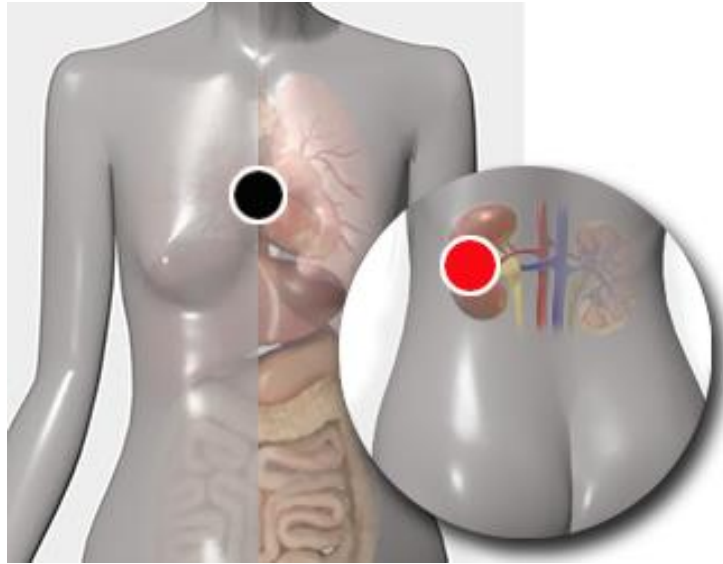
- **Head:**
occipital region - **kidney***



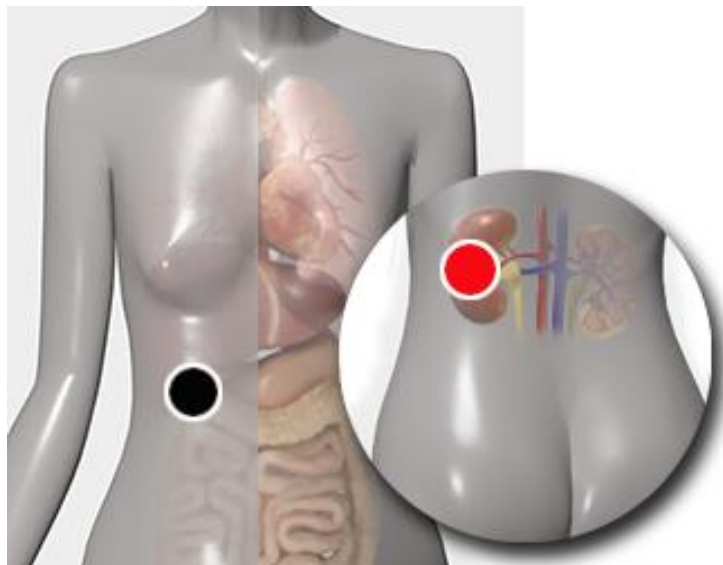
- **Intraspinal:**
vertebra - **kidney**



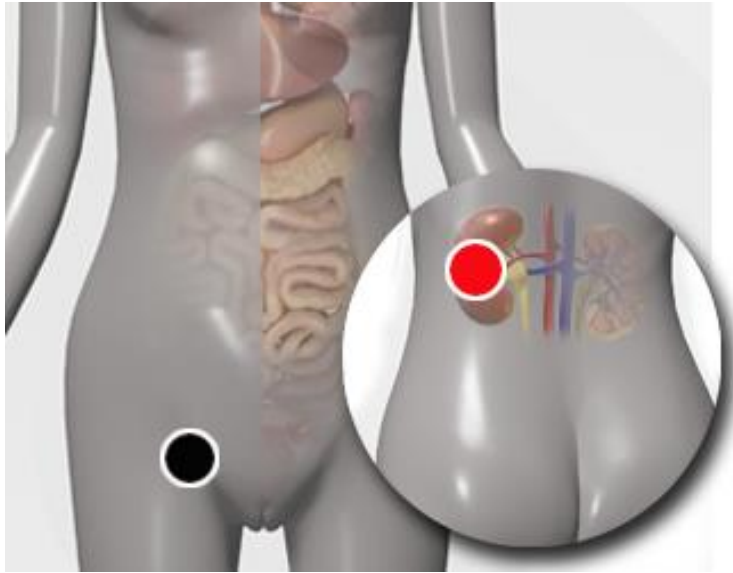
- **Thorax and upper limbs:**
mediastinum – **kidney**



- **Abdominal Region:**
subdiaphragmatic – **kidney**



- **Pelvis and lower extremities:**
inguinal - **kidney**



Digital information sources:

1. Source: "10 alimentos estrella para prevenir el cáncer" (10 Star foods to prevent cancer), Website Cuidate-plus, by Covadonga Díaz

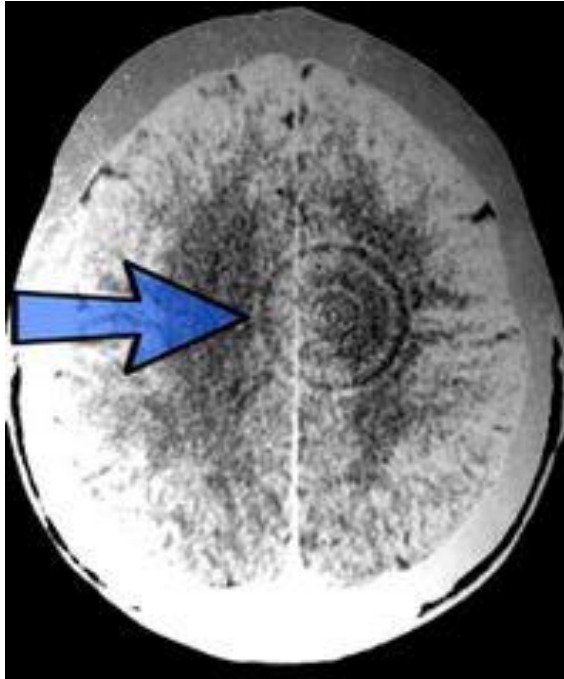
German New Medicine

Unit IV Lesson 4

A personal experience is what led Dr. Rike Geerd Hamer to investigate the relationship between traumatic experiences on a psychological level and the development of diseases, particularly cancer. In 1978, Dr. Hamer's son Dirk was shot while sleeping on the deck of a ship. A few days later he passed away in a hospital in Heidelberg, Germany. Shortly after, Dr. Hamer began to develop testicular cancer, while his wife also began to suffer from a series of cancerous diseases, until in 1985 she died as a result of a heart attack.

In those years, Dr. Hamer was chief internist at the oncology unit of the University of Munich. His hypothesis was that there must be a relationship between the development of cancer – in his case of the testicle – and a trauma or emotional crisis – in his case, the loss of his son. His position at the hospital allowed him access to information on hundreds of patients. So he started a study on the relationship between emotional stress and cancer. His research led him to discover the Hamer Focus and to develop *German New Medicine*, which is also known as *Hamer Therapy*.

In the hundreds of cases that Dr. Hamer studied, he found several common factors. In principle, having suffered a traumatic event such as the death of a loved one, an accident, rape, war situations, etc. In addition to the traumatic situation, the person has felt powerless in the face of such a situation. And another very important factor is not having been able to express or communicate that experience and the emotions derived from it. These are the common elements for the formation of what Dr. Hamer called "Dirk Hamer Syndrome" (DHS) in honor of his son, or also known as "biological conflict".



Under these circumstances, the organism's response is to create a focus in the brain, in a specific part that corresponds to the emotion or emotions involved. The so-called *Hamer focus* can even be detected as a circle in the brain mass, around which a series of concentric circles form. In the 1980s, when these types of circles had already been seen in brain scans, it was thought that they were anomalies in the detection equipment, so they were not given much attention.

The Hamer Focus (H.H: for its acronym in German Hamer Herd) have a relationship in size with the intensity and duration of the conflict. For Dr. Hamer they made great sense, because these circles, or Hamer focus, also have a correlation with the organs or tissues of the body that will also be affected, either by developing a cancerous process or tissue degeneration (necrosis or ulceration) . According to Hamer, the area of the body that will be affected can be understood based on the study of the embryonic development of the human body and its different systems and organs.

The study of more than 40,000 patients led Dr. Hamer to create a whole new paradigm, which we hope will also be of interest to the student of biomagnetism, who will be able to continue delving into this particular medicine, as novel and enlightening as Biomagnetism discovered by Dr. Isaac Goiz Duran. To summarize, let's look at the laws on which German New Medicine is based:

1st. Biological Law of Nature or Iron Law of Cancer (1)

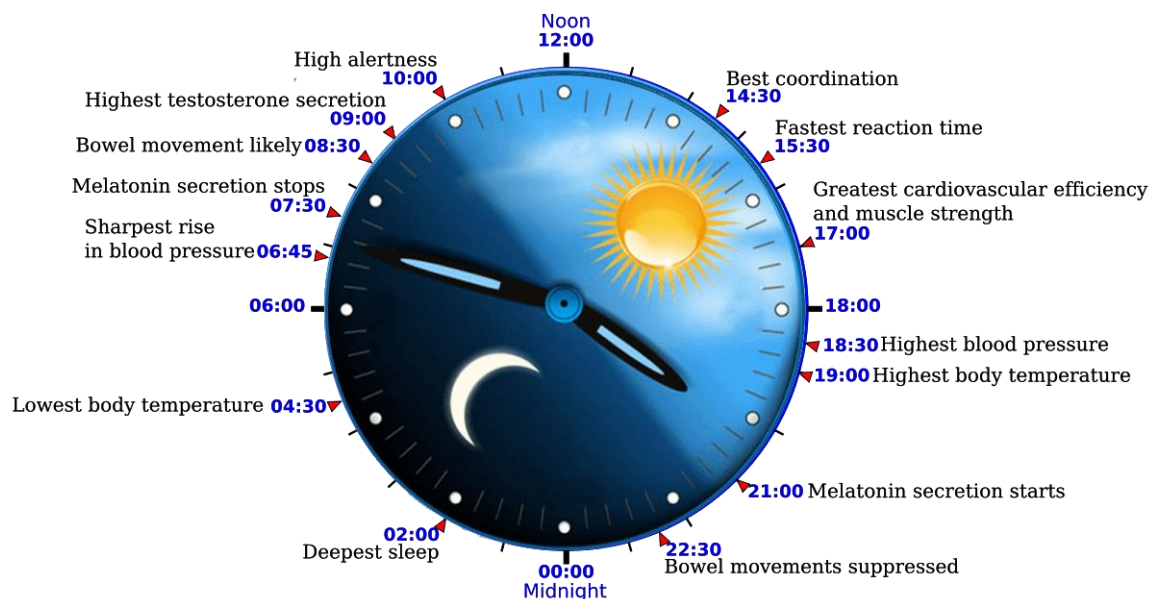
Every disease – or biological process – has its origin in a **DHS (Dirk Hamer Syndrom)**, that is, in an unexpected, traumatic experience, lived with a feeling of being isolated and alone; therefore difficult to communicate. This experience impacts at the same time on a psychic, cerebral and organic level. The content of the psychic conflict determines, at the instant of the DHS, the location of the Hamer focus (HH, Hamer Herd) in the brain, as well as the location of the cancer or oncoequivalent disease at an organic level. The evolution of the conflict in the three levels mentioned is a synchronous process.

The subjective feeling behind the conflict and the individual's perception of it determines which part of the brain will receive the shock and, consequently, which physical symptoms will manifest as a result of the conflict.

2nd. Biological Law of Nature

Faced with the traumatic experience, the body starts a process that Dr. Hamer called: **Special Program with Biological Sense (SBS)** which naturally follows two phases.

Starting from the shock, there is a correlation between the evolution of the psychological conflict, the evolution of the Hamer focus and that of the organic disease that basically consists of two phases that Dr. Hamer called "sympathotonic" and "vagotonic" because they present as alteration of the normal functioning of the autonomic nervous system and its circadian cycles.



1st phase: Any occurrence of a conflict such as the one mentioned is followed by a stage of stress (active phase of the conflict). Also called sympathotonic phase, or COLD phase because the blood vessels constrict causing cold in various areas of the body. In this phase, the person shows nervousness, cold hands, difficulty sleeping, muscle tension, lack of rest, relaxation, shallow breathing, etc. In this sense, practicing relaxation techniques, gentle exercise or stretching can mitigate the impact of psychological conflict. If the psychological conflict is not resolved and the phase lasts too long or becomes acute, the person may die, due to wear and tear.

2nd phase: At the moment in which the psychological conflict is resolved, the second phase is entered (resolving or healing phase of the conflict) in which the predominance is relaxation/tiredness. "vago-tonia" or WARM phase. In other words, at the moment in which the psychological conflict is resolved, the disease enters a self-healing process. If the body has a suitable environment, free of toxins and enough energy, the healing process occurs on its own. It should be noted that many times it is in the 2nd phase when the medical diagnosis or identification of a harmful disease is made, as is the case of leukemia or myocardial infarction, which, although it can cause important complications that must be treated, must be understood as healing processes.*

In fact, this healing phase is divided into two, and in the middle of both sub-phases there is a crisis, precisely when the vago-tonia reaches its peak. The nervous system tries to compensate for this state by activating the sympathetic system again, again generating a stress peak; Dr. Hamer called this point in the process epicrisis, which is nothing more than a healing crisis.

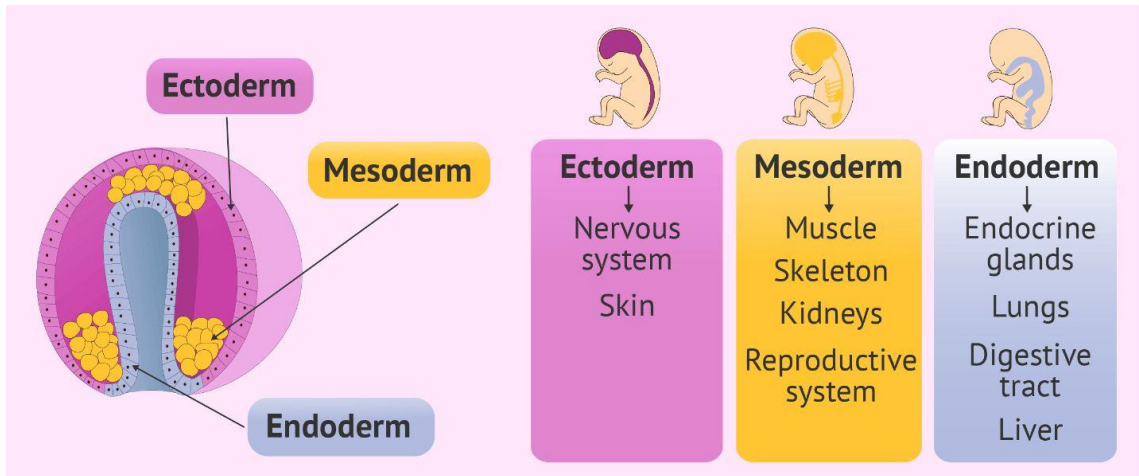
The specific symptoms of epicrisis are determined by the type of conflict and the organ involved. Heart attacks, cerebrovascular events, pulmonary embolisms, asthma attacks, migraine attacks, epileptic seizures, bleeding gastric ulcers, vomiting, diarrhea are just a few examples of the healing crisis. If the epicrisis occurs acutely, it can lead the organism to death.

3rd Biological Law of Nature, Ontogenetic System of Cancer and equivalents to Cancer

This law explains that there is a correlation between the psyche, the brain and the affected organ. This is explained based on the embryonic development of the human organism (as well as other

organisms), since from three germinal leaves: Endoderm (internal), Mesoderm (intermediate) and Ectoderm (external) all organs and tissues are developed. The layers are also related to the structures of the brain: brain stem, cerebellum, white matter, and cerebral cortex (gray matter).

Consequently, all the organs that derive from the same germ layer are controlled by the same part of the brain according to the scheme shown below.



ENDODERM

All organs that originate in the endoderm are controlled by the brain stem and are made up of adeno cells, which is why cancers of these organs are called adeno-carcinomas. During the phase of active conflict they generate cell proliferation; with the solution of the conflict the tumors stop growing immediately. In the healing phase these are degraded with the help of specialized micro-organisms (fungi and myco-bacteria). If tissue-related microbes are not available—possibly due to overuse of antibiotics—the tumor remains in place and encapsulates without further cell division.

MESODERM

The intermediate germinal leaf divides into two:

- Old brain mesoderm directed from the cerebellum. All organs and tissues derived from the old brain mesoderm generate cell proliferation during the conflict-active phase. With the resolution of the conflict, the tumors stop growing immediately. In the healing phase, tumors are degraded by the corresponding microbes, otherwise they are encapsulated without further proliferation.

- b) New brain mesoderm, controlled by white matter. All organs and tissues that originate from the mesoderm of the new brain produce tissue loss during the conflict-active phase. With the resolution of the conflict, the process of tissue degradation immediately disappears. During the healing phase, lost tissue is repaired through cell proliferation, ideally with the help of tissue-related bacteria. The natural healing process is typically accompanied by swelling (edema), inflammation, fever, "infection" and pain. Cancers such as lymphoma, adrenal cancer, Wilms tumor, osteosarcoma, ovarian cancer, testicular cancer, or leukemia are all healing in nature and indicate that the conflict has already been resolved.

German New Medicine: synoptic table of the evolution of the disease

	ENDODERM	ANCIENT MESODERM	NEW MESODERM	ECTODERM
Controlled by:	Brain stem	Cerebellum	white matter	Cerebral cortex
Biological Laterality:	No	Yes	Yes	Yes
Conflict phase: (ca phase)	Cell proliferation (tumors).	Cell proliferation (tumors).	Necrosis or loss of tissue.	Necrosis or loss of tissue; functional loss.
pclA healing phase: (exudative)	Action of microbes: "infection".	Mycobacterial action: "infection".	Restitution of tissue with cell proliferation (healing tumors).	Restitution of tissue with cell proliferation (healing tumors).
E P I C R I S I S				
pclB healing phase: (restorative scar)			Bacterial degradation action: "infection".	Restoration of tissue or function.
Microorganisms involved	Fungi and mycobacteria	Mycobacteria	Bacteria	Bacteria and viruses (if they exist)
Psycho-biological conflict:	Survival: feeding (conflicts of not being able to catch, swallow or digest a mouthful), breathing (fear of dying), abandonment, refuge, reproduction	Attack and concern in the nest.	Self-devaluation and/or loss deep.	Interpersonal and social relationships: conflicts of separation, territorial (loss or lack of ability to mark territory), identity, sexual, hearing conflicts and motor conflicts (not being able to escape, being trapped).
Organs and derived tissues:	Mouth (submucosa): palate, tongue, tonsils, glands salivary and parotid Naso-pharynx, esophagus (lower third), liver, pancreas, stomach, duodenum, small intestine, colon, sigmoid and rectum (upper third), bladder, collecting tumuli of the kidney thyroid gland, prostate uterus and uterine tubes, lungs (pulmonary alveoli), cells in calyx (in bronchi), nucleus of the acoustic nerves.	Corium of the skin (deep skin), pleura (covering of the lungs), peritoneum (covering of the abdominal cavity and abdominal organs), pericardium (skin that covers the heart), mammary glands (milk-producing glands).	Bones (includes dentin), cartilage, tendons and ligaments, connective tissue, fatty tissue, lymphatic system (lymphatic vessels and nodes), blood vessels (except coronary vessels), muscles (striated musculature), myocardium (80% of cardiac musculature), renal parenchyma, adrenal cortex, spleen, ovaries, testes. Note: Muscle movement is directed from the motor cortex. The smooth muscle of the myocardium (20%), the colon and the uterus are controlled from the midbrain.	Epidermis, periosteum, mouth (superficial mucosa), including lips, palate, gums, tongue, and lining of salivary gland ducts; nasal and sinus membrane; inner ear; lenses, cornea, conjunctiva, retina and vitreous body of the eyes; toothpaste. Lining of: milk (mammary) ducts, thyroid gland ducts, pharyngeal ducts, heart vessels (coronary arteries and veins); stomach (lesser curvature), the bile ducts and gallbladder, the pancreatic ducts. Esophagus (upper 2/3), laryngeal mucosa, bronchial mucosa. cervix, vagina Lining of: renal pelvis, bladder, ureter, urethra, rectum (distal part). Cells of the Central Nervous System.

ECTODERM

All organs and tissues that originate from the ectoderm are controlled from the cerebral cortex, and therefore are related to more advanced biological conflicts. Ectodermal organs and tissues are made up of flat or squamous epithelial cells. That is why

cancers of these organs are called "squamous epithelial carcinomas."

All organs and tissues derived from the ectoderm generate tissue loss (ulceration) during the conflict-active phase. With the resolution of the conflict the process of ulceration stops immediately. In the healing phase, the tissue is replenished and repaired through cell proliferation. The natural healing process is typically accompanied by swelling (edema), inflammation, fever, and pain. The bacteria (if available) aid in the formation of scar tissue resulting in symptoms of a "bacterial infection". The ectodermal tissue can also present functional loss or alteration, as we see for example in hypoglycemia, diabetes, visual and auditory dysfunctions, sensory or motor paralysis.

During the healing phase, to be precise, after the epicrisis, the organ and the tissue recover their normal function.

Another concept that is of great importance in German New Medicine is the cerebral predominance of the organism or biological laterality (right or left), which has to be taken into account to accurately locate the HH in the brain for all tissues and organs except for those who are controlled by the brain stem. Laterality allows us to know which side of the brain the conflict impacts and, therefore, which side of the body is affected. There are several neurological tests to determine cerebral predominance, such as the applause test developed by Hamer and the Luria test, also the hand with which the individual writes normally indicates their cerebral predominance.

4th Biological Law of Nature

The micro-organisms live in symbiosis with the human being since they are endemic, they serve the healing phase and their action correlates directly with the three embryonic layers during the healing phase. Its function is for the benefit of the human being. The important thing about this fourth law is that microorganisms do not cross the threshold of the tissue. Fungi and mycobacteria (such as tuberculosis TB) only operate in tissues that originate from the endoderm and mesoderm of the old brain, while bacteria only participate in the healing of tissues that derive from the mesoderm of the new brain. During decomposition, remnants of the healing process are eliminated through stool, urine, or respiratory

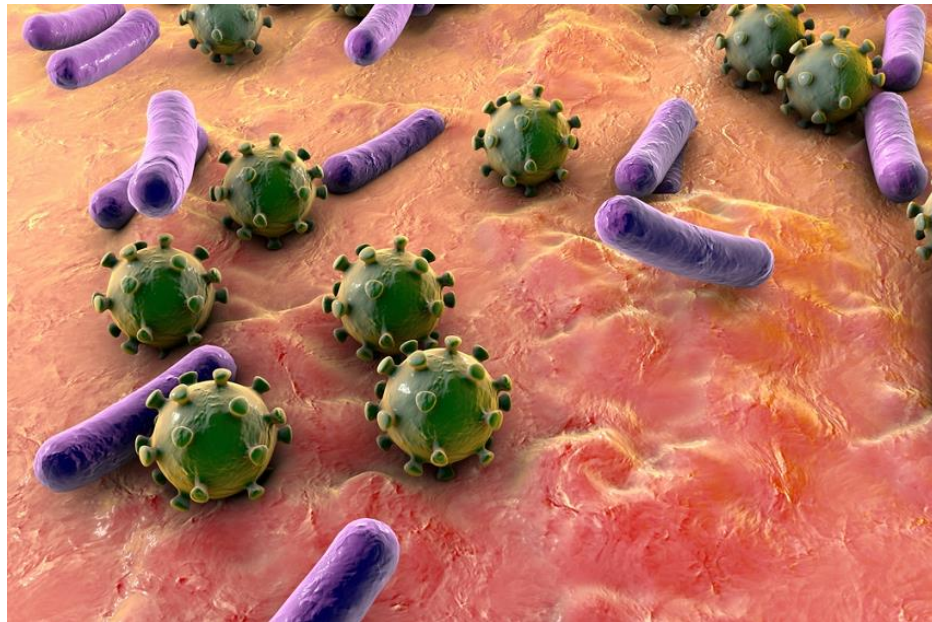
Biomagnetism Advanced Course

Presented by: www.biomagneticguide.com

secretions from the lungs, typically accompanied by night sweats, discharge (potentially mixed with blood), swelling, inflammation, fever, and pain. So what we commonly call infection is part of the healing process.

Bacteria operating exclusively in white matter-controlled organs and tissues help to replenish and replenish tissue loss that occurred during the conflict-active phase. They also participate in the formation of scar tissue.

Viruses help the tissue reconstruction process controlled by the cerebral cortex of ectodermal origin.



5th Law of Nature or Quintessence

Every disease is part of a Significant Biological Special Program (SBS) designed to assist an organism in resolving a biological conflict. "Dr. Hamer's discoveries provide the ultimate evidence that the doctrines of modern medicine are built on false premises and are therefore completely wrong.

The Five Biological Laws reveal that everything in Nature has a biological meaning and that nothing is "sick" or "evil". The biological laws that constitute this true New Medicine are firmly based on the natural sciences, and are at the same time in perfect harmony with other natural laws, including spiritual laws. For this reason, in Spain, the New Germanic Medicine has been called The Sacred Medicine" (Markolin, 2007)."

Hamer Focus and bioenergetics

How we see in the second law, what we commonly call disease, is actually a process by which the body tries to solve, it is important to remember that it is divided mainly into two phases, the **COLD** or active and **WARM** or curative. Before applying the **mastoid – kidney** pair (which also corresponds to the emotion of fear) the therapist will have to ask for bioenergetics if the person is in stage 1 or 2.

If you the person is in the COLD phase, biomagnetism can help to move to the second stage. While if it is in the second stage, biomagnetism therapy could interfere with the body's natural healing process, which would cause more acute symptoms or the manifestation of epicrisis. All this can be asked through bioenergetics.

- Is the patient suffering from Dirk Hamer syndrome?
- Is the patient in the Cold or Warm phase?
- Should the mastoid-kidney pair be applied in this session?
- Will the application of biomagnetism cause an epicrisis? (healing crisis)

In short, many other questions can be formulated that the biomagnetist deems appropriate at the moment.

How the third law states, there is a biunivocal relationship between the Hamer Foci, in the brain; and the affected organ(s) in the body.

Therefore, it could also be tested by placing a negative magnet in the area of the Hamer Focus in the head and the positive one in the affected organ.

Conclusion

Some of the postulates stated in the five laws of Germanic medicine may seem quite radical or even absurd to most people, since they contravene the principles on which allopathic medicine is based, in what refers to the disease in general and cancer in particular.

When observing the phases of the evolution of the disease, which Dr. Hamer correlated with the embryonic evolution, it is striking that the symptoms that allopathic medicine considers a deterioration of the state of health, for the German New Medicine represent a phase More about the healing process. We refer to symptoms such as fever, diarrhea, organ and tissue dysfunction that occur in the so-called vagotonic stage;

and that allopathic medicine tries to alleviate through multiple means such as analgesics, anti-inflammatories, antidiarrheals, etc.



However, the healing crisis has been understood by many other alternative medicines such as homeopathy or traditional Chinese medicine, just to mention the most recognized ones. This leads us to change our notion of disease, and leads us to understand it as a process in which the body tries to resolve a conflict that began on an emotional or psychic level.

More than fighting against the symptoms, it is necessary to understand the root of the conflict, bring it to the light of consciousness and, above all, allow the person to feel and express it, in order to begin with their healing. About the techniques to help the person to discover the psychic conflicts, emotional blocks we will talk more extensively in the next unit of the course.

Another aspect that draws special attention is that for Dr. Hamer, microorganisms such as viruses, bacteria and fungi, far from being the enemies of health, play a crucial role in the functioning of the organism and even in disease processes and healing. In fact, Dr. Hamer mentions that, in many cases, if the tissues do not have the necessary microorganisms, the tissue and organ will not be able to restore themselves 100%. Concepts that go against allopathic medicine and the planning of Dr. Isaac Goiz Durán where the presence and proliferation of

Biomagnetism Advanced Course

Presented by: www.biomagneticguide.com

pathogens is the cause of diseases.

What is similar to both paradigms – New Germanic medicine and Biomagnetism – is that more than searching for pathogens, the therapist will have to look for the root of emotional imbalance, which in turn is the cause of energy and physical imbalances.

Digital information sources:

1. Source: Taken from “¿Cómo es que las personas “lindas” siempre están enfermas?” (How is it that “pretty” people are always sick?) An attempt at integration between psychoanalysis and German New Medicine. by Diana Esther Medina Niembro, Benson-Henry Institute of Mind-Body Medicine; Presented in the digital magazine of psychology of the U.N.A.M Iztacala, Mexico 2011.

* **NOTE:** This phase is a state similar to that described in our chapter on low-grade silent or systemic inflammation. Although here it is probably a state of reaction of the organism and a more acute inflammation.